

Technical Service Bulletin 27

Bow Cover
 March 13, 2000

Parts Needed

Bow cover, S22, Red – MBC0011594	Bow cover, S22, Blue – MBC0011595
Bow cover, E22, Grey – MBCZ822014	Bow cover, E22, Teal – MBCZ822015
Bow cover, E22, Red – MBCZ822016	Bow cover, E22, Green – MBCZ822017
Bow cover, E22, Claret – MBCZ822018	Bow cover, E22, Blue – MBCZ822011
Qty 22 - Screw studs – MBC0011301	

Tools Needed

Grease pen	Drill	9/64 th Drill Bit
Dremel w/ beveling bit	Tape measure	Screwdriver

⚠ WARNING

Always be sure to wear OSHA approved eye protection when using a drill or other rotary tools as these have the potential to throw debris into the air.

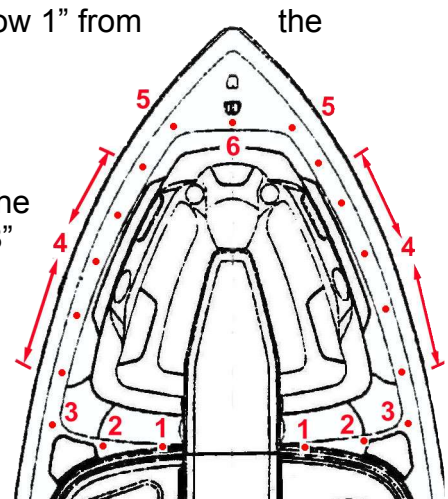
Procedure

Step 1 – Marking Center Screw Stud Location

First, using a grease pen mark a spot in the center of the bow 1" from the gelcoat edge of the bow passenger area (position 6).

Step 2 – Marking Starboard Screw Stud Locations

First, mark a spot 10 7/8" to starboard and 1 3/8" out from the edge (position 5). The next 5 screw studs are located 9 7/8" apart and 1 1/4" out from the edge (position 4). The seventh screw stud is located at the aft corner of the open bow passenger area 9 7/8" from the last screw stud and 2 3/4" out from the edge (position 3). The eighth screw stud is located 9 7/8" from the previous screw stud and 1 1/2" out from the edge (position 2). The last screw stud attached to the gelcoat on the starboard side is located 9 7/8" from the previous screw stud and 3/4" from the edge (position 1).

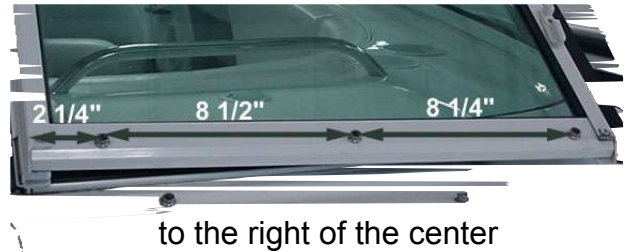


Step 3 – Marking Port Screw Stud Locations

Use the same measurements as Step 2 to mark port side screw stud locations.

Step 4 – Windshield Door Screw Studs

With the windshield door open mark the first screw stud on bottom section of the door, above the bend, at 2 ¼" from the left edge. Next, measure and mark the middle screw stud 8 ½" to the right of the first screw stud. Finally, mark the last screw stud location 8 ¼" to the right of the center screw stud.



Step 5 – Drilling The Hull Screw Studs

Using a 9/64th drill bit, drill pilot holes at all the screw stud locations that were marked in Steps 1–3. After drilling the pilot holes use a Dremel or other high-speed rotary tool to bevel a small area around each hole to prevent cracking of the gelcoat when the screw studs are screwed into position.

Step 6 – Drill Windshield Door Screw Studs

Use a 9/64th drill bit to drill pilot holes for the three screw studs located on the windshield door. **NOTE: Do not drill all the way through the windshield doorframe.**

Step 7 – Install Screw Studs

First, remove any dust or leftover grease pen marks. Next, use a screwdriver to install the screw studs in the pilot holes drilled in Steps 5-6. Finally, close the windshield door.

Step 8 – Attach Bow Cover

Starting at the bow fasten the bow cover onto the screw studs installed in Step 7.

