

Technical Service Bulletin #32

E21, E22, X22 Depth Sounder with Water & Air Temperature Installation

April 4, 2000

Note: When installing **only** a Depth Sounder skip Step 3 & Step 6

Parts Needed

Depth, Water/Air Temp Kit – MGA0010545	7 #8 Screws – Dealer supply
3 #8 Washers – Dealer supply	

Kit Includes

Amplifier modules	2 Temperature sensors	Depth transducer
Epoxy		

Tools Needed

Drill	Screwdriver	Mixing cup and stick
1/8 th Drill bit	Tie wrap	Marine sealant

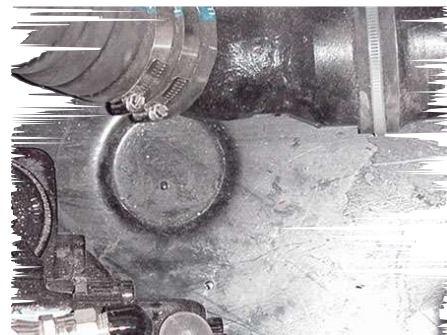
⚠ WARNING

Always be sure to wear OSHA approved eye protection when using a drill or other rotary tools as these have the potential to throw debris into the air. Always be sure to follow manufacturer-specified procedures when using adhesives. Some adhesives may be flammable.

Procedure

Step 1 – Remove Motorbox and Bulkheads

First, completely remove motorbox assembly by removing the four thumbscrews holding the box in place. After placing the motorbox in a safe location, remove the aft seat cushions and base. Next, remove the two aft hatches between the fuel tank bulkhead and the engine, exposing the shaft log and steering cable bracket. Remove the two bulkheads in the trunk separating the trunk from the fuel tank after removing the thumbscrew holding each bulkhead in position. Finally, locate the transducer cup on the port side of the bilge, behind the engine next to the exhaust. Clean and dry the area carefully.



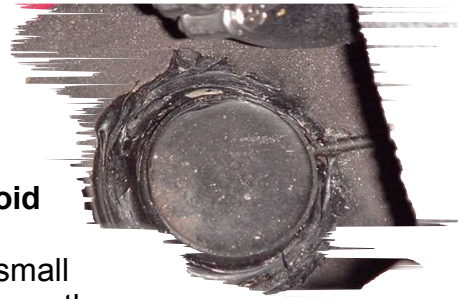
DRILL WITH HOLE SAW WITHOUT PILOT DRILL AND REMOVE LINER.

Step 2 – Install Transducer

First, feed the transducer end of the wire between the forward face of the fuel tank and the back of the aft seat. The transducer and wires need to be routed through the starboard side of the bilge along the fuel hoses.

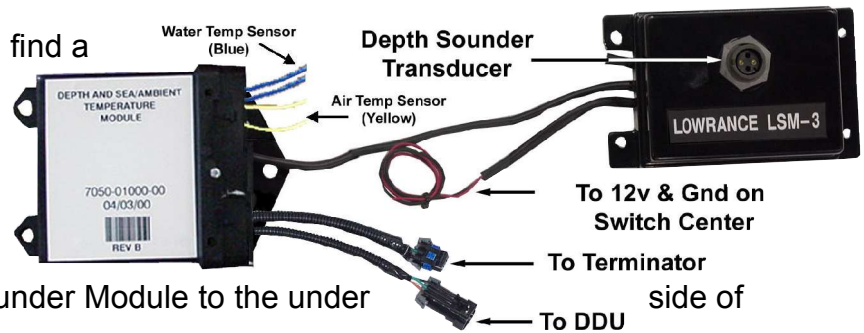
NOTE: Make sure to tie off transducer wires to avoid rubbing or binding on the prop shaft.

Next, thoroughly mix the included epoxy and apply a small amount to the face (flat side) of the transducer, then pour the remaining epoxy into the transducer cup. Place the transducer into the epoxy, twisting and turning it to force any air bubbles out from under the transducer face. The face of the transducer should be parallel with the hull, with a minimum amount of epoxy between the hull and transducer. Hold the transducer down with a weight until the epoxy dries.



Step 4 – Installing Depth Sounder Modules

Under the dash, behind the radio, find a clear area of fiberglass and install the two components of the Depth Sounder Module, after drilling pilot holes, using the #8 screws. Use the three washers along with #8 screws to secure the component labeled Depth Sounder Module to the under the dash.



It may be necessary to install the Depth Sounder Modules on the back of the drivers kick panel if enough space for installation cannot be found under the dash.



Terminator Plug

Step 5 – Wiring the Depth Sounder Module

First, remove the Terminator Plug from the nine pin male connector wired to the Digital Display Unit (DDU) and attach it to the nine pin male connector on the Depth Sounder Module.

Note: The Terminator Plug must be connected or the DDU and Depth Sounder will not work.

Next, attach the nine pin male connector from the DDU to the nine pin female connector on the Depth Sounder Module. Finally, run the plug end of the Transducer along the starboard wiring loom and connect it to the receiving port on the Depth Sounder Module labeled “Lowrance LSM-3”.

Finally, wire the red and black wires on the “Lowrance” module to the Switch Center, the black wire to the Ground input.

Remove the purple wire with the red tracer from the back of the ignition switch. Then, connect the purple/red wire to the “piggyback” spade connector on the depth finder wiring harness. *****



Step 6 – Wiring Water & Air Temperature Sensor

Step 7- Battery switch must be cycled off and on.