



**Technical Service Bulletin #53
DECC Relocation and Switch Replacement**

September 04, 2001 –Rev Part # April 29, 2003

Relocate DECC black box to vertical bulkhead. Remove if under dash access hole.

All 2000 + 2001 models of Epic boats with millennium style dash use an electronic switching system.

Switches must be replaced along with the box in order for the software to function properly. If the foil is there under the Push button components do not change switch boards.

Call for a replacement parts if upgrade is necessary
Once the procedure is completed, old components need to be returned immediately for recycling and reprogramming.

Toyota Marine Sports	Mark the hull number on back of deck box:
300 East Crittenden Blvd	Return parts to Toyota Marine.
Groveland, Fl 34736	
352-429-6136 Rick Cohn- East, or Jeff Dorge- West	253-826-2913

Parts

MGA0011908 Electronic Control Process or(DECC),E21,E22,X22,S22,SX22 (if needed) EMI version 1.39 is a 15 amp relay and good for all except X Model Boats.
MGA0011921 OCM,'00-'01,4Button(7-10)Labels, W/Jumper
MGA0011917 SwitchPanel,6Button,00,01,02MY,Button7To12, Labeled,w/Jumper
MGR001181406 Decal. DRAIN (if needed)
MGR001181405 Decal, FILL (if needed)

Tools Needed

Phillips screwdriver	3/8" nut driver	Tie raps

WARNING

Always be sure to wear OSHA approved eye protection when using a drill or other rotary tools as these have the potential to throw debris into the air.

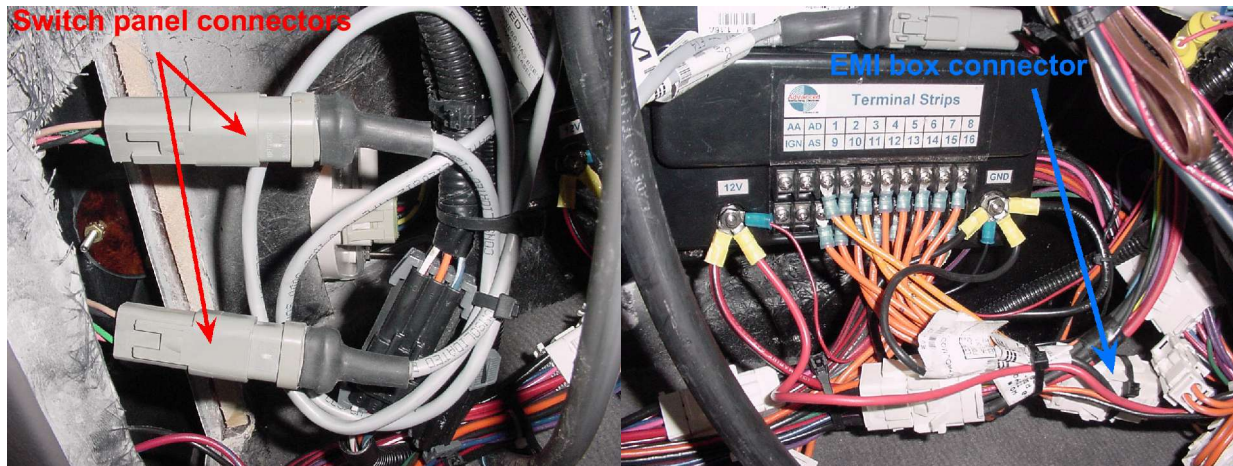
Procedure

Step 1 – Turn the battery off

The battery switch is located under the aft center seat on series S22. The switch is located inside the engine box at the starboard front side near the floor on series 21, 22 and X22. Locate the battery switch and turn it to the OFF position.

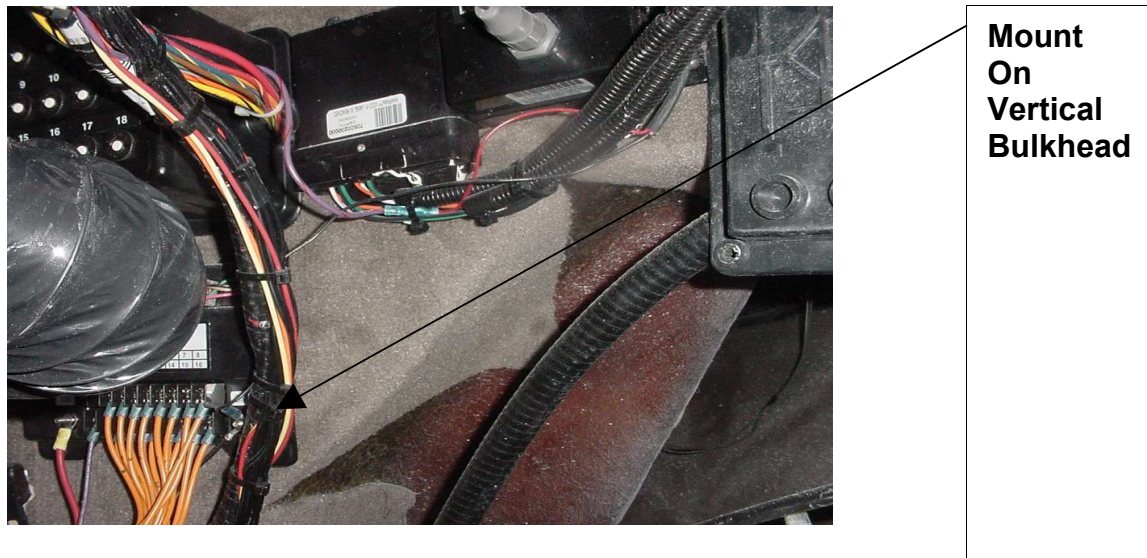
Step 2 – Disconnecting connectors and wires from EMI box

First, locate the connector on the orange wires coming from the EMI box, and disconnect it. Finally, locate the connectors coming from the switch panels, and disconnect them.



Step 3 – Removing positive and negative leads

Remove the nuts on the positive and negative leads, located on either side of the EMI box, making sure to group the + wires, then the negative as not to lose them.



Step 4 – Replacing EMI box

First, remove all screws from EMI box (locations them in a safe location for later use. Next, remove the old EMI box. Finally, place the **new EMI box into the space r** bulkhead. **Do not mount under dash upside d** damage is possible. Fasten the screws into place

New Ignition positive and purple ignition

Note the larger size stud if other wires are attached change to a yellow insulated connector 3/8 hole.

Step 5 – Replacing switches

Remove the cover plates from the four and six button switch panels. Next, remove the screws securing the switch panels in place. Then, install the new switch panels, and fasten the screws into place, securing the panels. Finally, replace and secure the cover plates.



Reflective inserts



Step 6 – Reconnecting wires and recycling power

Secure the connectors from the switch panels, as well as the connector from the EMI box. Next, replace the positive and negative wire to their appropriate leads, securing them into place with the nuts. **NOTE:** If the boat has a depth finder, refer to campaign # 2004. Finally, turn battery switch back to on position, and verify applied procedure is functioning properly.

