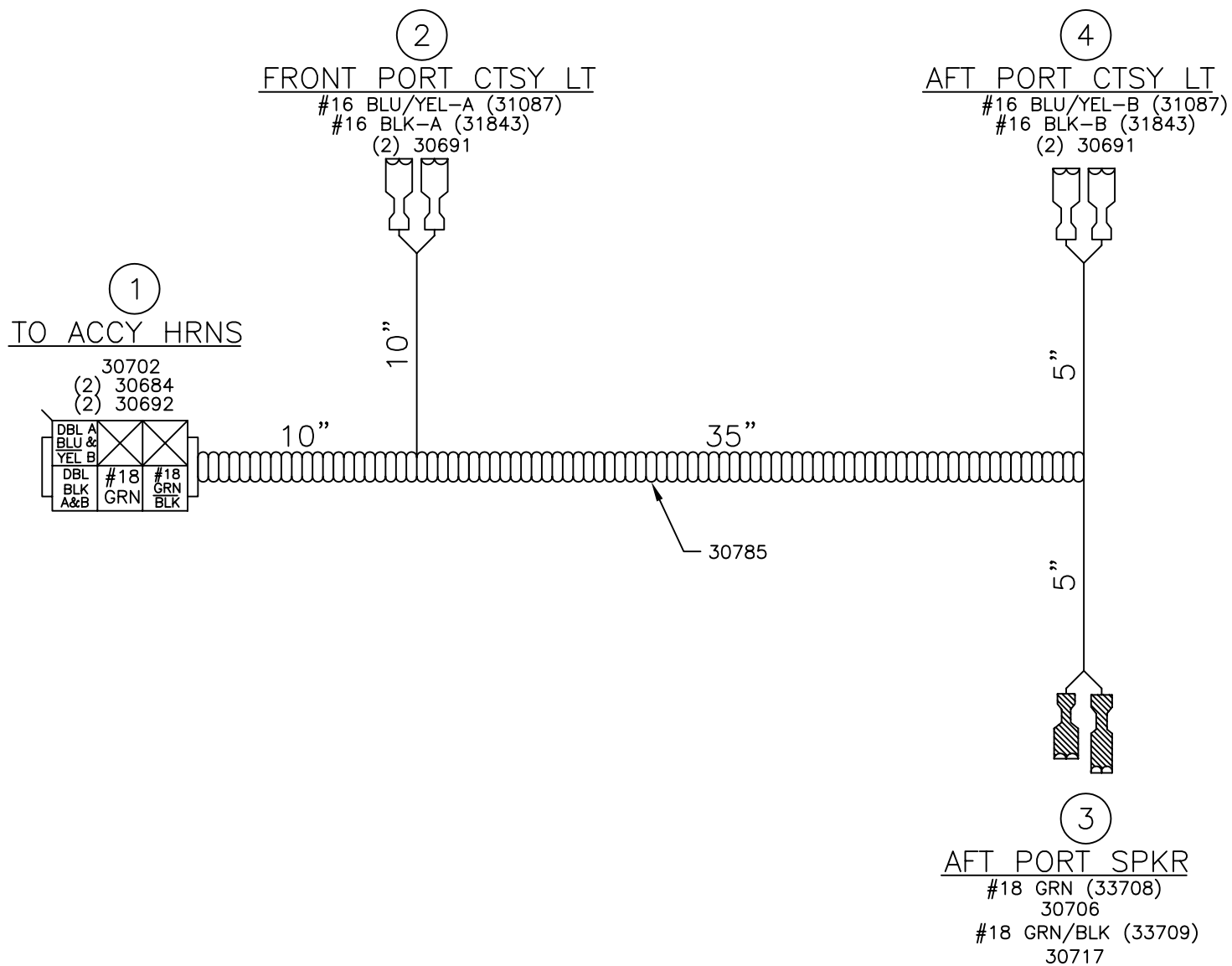


MATERIAL/COLOR	THICKNESS	FINISH	SCREEN COLOR	SILK SCREEN #	HARNESS BOARD	WIRE HARNESS	MOLD#/FIXTURE#	NOTES:	C ECR 4855	ADDED TAG NOTES TO #16 PUR WIRES	1/26/98	MK	CUSTOMER: MARITEC
									B ECR 4832	MADE SEVERAL LENGTH CHANGES	12/16/98	MK	PART ACCY HRNS
									A	RELEASED TO PRODUCTION	6/17/98	MK	BOAT: EPIC-OPEN BOW
									REV. ECR/ECN #	DESCRIPTION	DATE	BY	BUILT FOR TOYOTA
<p align="center">INDIANA MARINE PRODUCTS, INC 409 GROWTH PARKWAY, ANGOLA IN 46703 COPYRIGHT OF INDIANA MARINE PRODUCTS, INC.</p> <p align="center"><small>THIS DRAWING IS THE PROPERTY OF INDIANA MARINE PRODUCTS, INC. AND IS TO BE USED EXCLUSIVELY FOR THE MANUFACTURE OR INSTALLATION OF THE PRODUCT SHOWN THEREON, BY WRITTEN CONSENT ONLY.</small></p>													YEAR: 1999
CHECKED BY:												DRAWN BY: M. KLINE	CAD # M441425W
CHECKED BY:												DATE: 6/17/98	PART NUMBER:
ENG MGR:												SHEET: 1 OF 1	REV: 41425 C



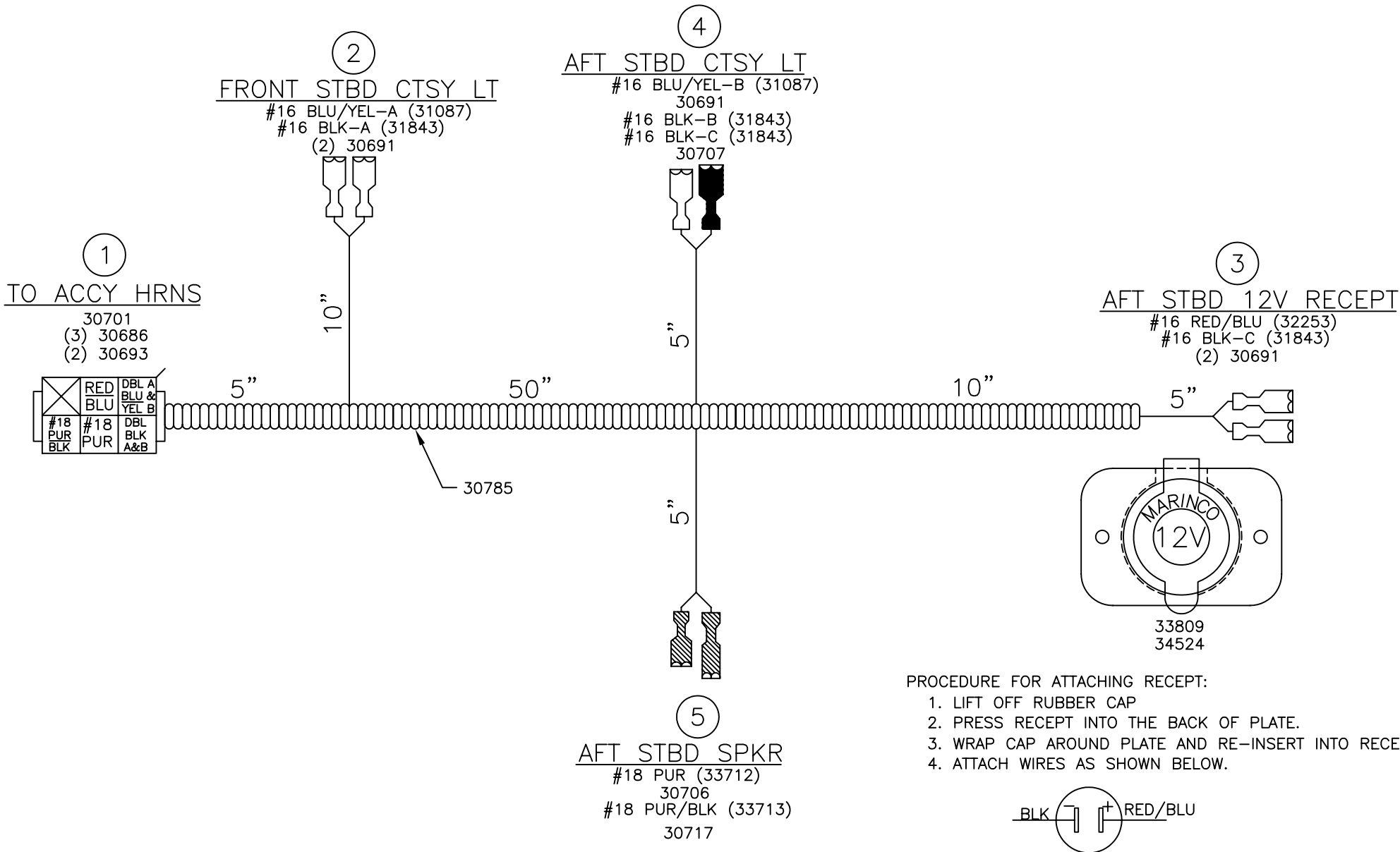
MATERIAL/COLOR	
THICKNESS	
FINISH	
SCREEN COLOR	
SILK SCREEN #	
HARNESS BOARD	
WIRE HARNESS	
MOLD#/FIXTURE#	

NOTES:	

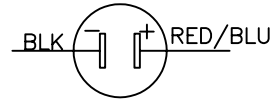
REV.	ECR/ECN #	DESCRIPTION	DATE	BY
A		RELEASED TO PROTO	6/17/98	MK

CUSTOMER: MARITEC	
PART: PORT COAMING HRNS	
BOAT: EPIC - OPEN BOW	
BUILT FOR TOYOTA	
YEAR: 1999	
CHECKED BY:	DRAWN BY: M. KLINE
CHECKED BY:	DATE: 6/17/98
ENG MGR:	SHEET: 1 of 1
CAD #	M441426W
PART NUMBER:	41426
REV:	A

INDIANA MARINE PRODUCTS, INC
 409 GROWTH PARKWAY, ANGOLA IN 46703
 COPYRIGHT OF INDIANA MARINE PRODUCTS, INC.
 THIS DRAWING IS THE PROPERTY OF INDIANA MARINE PRODUCTS, INC. AND IS TO BE USED EXCLUSIVELY FOR THE MANUFACTURE OR INSTALLATION OF THE PRODUCT SHOWN THEREON, BY WRITTEN CONSENT ONLY.



- PROCEDURE FOR ATTACHING RECEPT:
1. LIFT OFF RUBBER CAP
 2. PRESS RECEPT INTO THE BACK OF PLATE.
 3. WRAP CAP AROUND PLATE AND RE-INSERT INTO RECEPT.
 4. ATTACH WIRES AS SHOWN BELOW.



MATERIAL/COLOR	NOTES:	C	ECR 4832	ADDED 5" TO FWD CTSY LT B.O.	12/17/98	MK	CUSTOMER: MARITEC					
THICKNESS		B	ECR 4818	ADDED MARINCO FRONT MOUNT PLATE	11/20/98	MK	PART STBD COAMING HRNS					
FINISH		A		RELEASED TO PROTO	6/17/98	MK	BOAT: EPIC - OPEN BOW					
SCREEN COLOR		REV.	ECR/ECN #	DESCRIPTION	DATE	BY	BUILT FOR TOYOTA					
SILK SCREEN #		<p style="text-align: center;">INDIANA MARINE PRODUCTS, INC 409 GROWTH PARKWAY, ANGOLA IN 46703 COPYRIGHT OF INDIANA MARINE PRODUCTS, INC. <small>THIS DRAWING IS THE PROPERTY OF INDIANA MARINE PRODUCTS, INC. AND IS TO BE USED EXCLUSIVELY FOR THE MANUFACTURE OR INSTALLATION OF THE PRODUCT SHOWN THEREON. BY WRITTEN CONSENT ONLY.</small></p>						YEAR: 1999				
HARNESS BOARD								CHECKED BY:	DATE:	DRAWN BY: M. KLINE	CAD #	M441427W
WIRE HARNESS								CHECKED BY:	DATE:	6/17/98	PART NUMBER:	41427
MOLD#/FIXTURE#								ENG MGR:	SHEET:	1 of 1	REV:	C